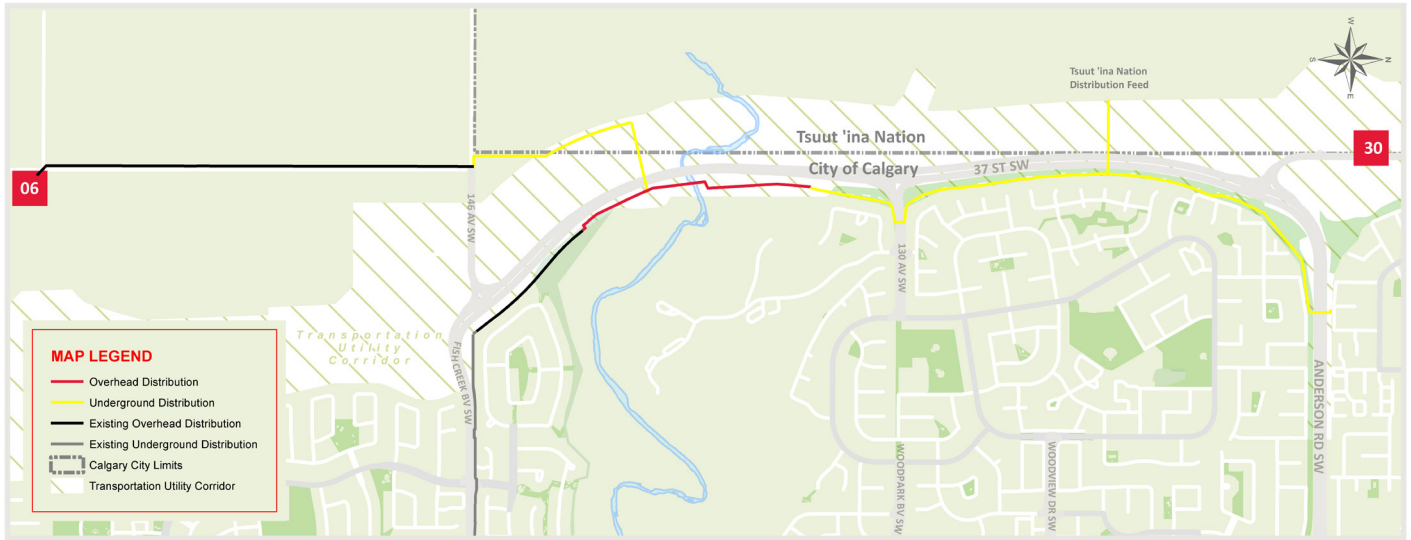


# ENMAX DISTRIBUTION PROJECT

## SOUTHWEST CALGARY RING ROAD

### PROJECT OVERVIEW

ENMAX is working on a complex, multi-year project to relocate electrical infrastructure to accommodate the construction of the Southwest Calgary Ring Road (SWCRR) from 69 Street SW to Macleod Trail/Highway 2A. In 2015, ENMAX began construction on a distribution duct bank from the new ENMAX No. 35 Substation located near 90 Avenue in South Glenmore Park to ENMAX No. 6 Substation located at 16300 – 37 Street SW.



### PROJECT DETAILS

ENMAX is continuing construction on the electrical distribution system north of Anderson Road SW to 146 Avenue SW. This work includes:

- an underground distribution line on the east side of 37 Street SW adjacent to the community of Woodbine
- an overhead distribution line at Fish Creek Park that will connect to the existing overhead distribution on the south side of the park
- two underground road crossings at 37 Street SW and underground road crossings at Anderson Road and 130 Avenue SW

This work is scheduled to resume in December 2016 and the anticipated completion date for all the work listed above is summer 2017.

Some tree or shrub removal will be required to complete the underground duct bank as well as a pathway closure. Pathway detour signs will be posted for pedestrians and cyclists. As sections of the new underground duct bank are constructed, utility crews will begin installing the electrical cable.

For more information on the Southwest Calgary Ring Road project and routing, please visit the Alberta Transportation website: <https://www.transportation.alberta.ca/804.htm>.

### MORE INFORMATION

For more information about the project, please contact:

#### ENMAX POWER CUSTOMER RELATIONS

Phone: (403) 514-3990

E-mail: [powercustomerrelations@enmax.com](mailto:powercustomerrelations@enmax.com)

Website: [enmax.com/ringroad](http://enmax.com/ringroad)