

# Southwest Calgary Ring Road

## Construction Advisory

February 23, 2017

### Start of Fish Creek Realignment

**Activity and Location:** As construction commences for the Southwest Calgary Ring Road (SWCRR), KGL Constructors will be realigning a portion of the Fish Creek near future bridge structures. River realignment is a common engineering process that creates a new, permanent water channel. This will allow for the construction of the SWCRR bridges, while minimizing impact to the Fish Creek's habitat by providing a bioengineered channel comparable to the river's original path.

This technique integrates living trees, shrubs and grasses together with tree roots, woody debris and rocks to increase the strength and structure of the streambank, while blending into the natural environment.

#### Work Schedule\*:

<b>March - April 2017</b>	<ul style="list-style-type: none"><li>Start excavation of new channel<ul style="list-style-type: none"><li>Plugs are maintained at both ends to prevent the entry of water</li><li>Fish Creek remains undisturbed</li></ul></li></ul>
<b>April - June 2017</b>	<ul style="list-style-type: none"><li>Complete bioengineering on new channel<ul style="list-style-type: none"><li>Installation of tree revetments and root wads, as well as willow staking</li><li>Bioengineering and riparian planting will be established prior to release of water to the new channel</li></ul></li></ul>
<b>April 2018</b>	<ul style="list-style-type: none"><li>New channel is opened<ul style="list-style-type: none"><li>Timed to minimize impact on fish</li><li>A fish rescue will be carried out on the abandoned channel</li><li>Fish Creek follows new channel</li></ul></li></ul>

*\*This is an estimated timeline and is subject to change*

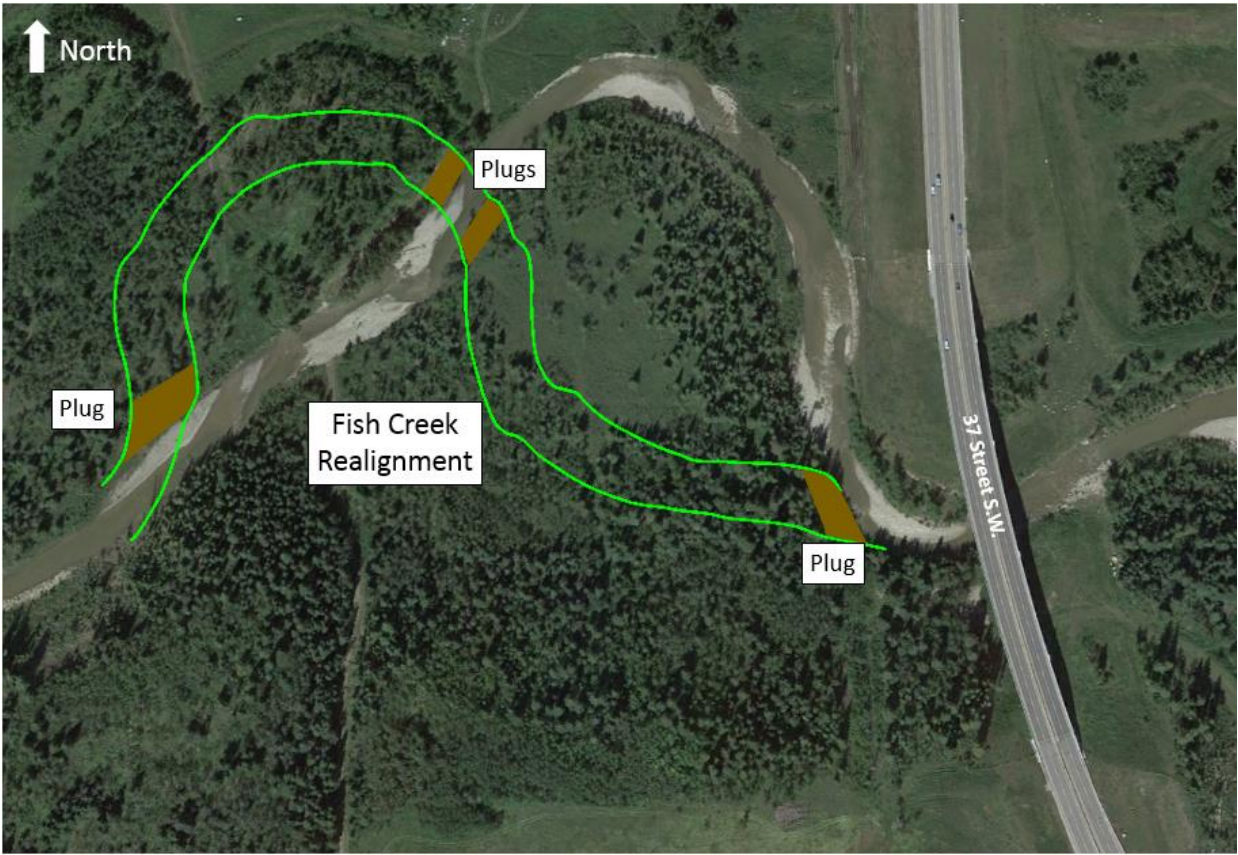
**Work Hours:** Monday to Saturday from 7:00 a.m. to 10:00 p.m., and Sundays and holidays from 9:00 a.m. to 10:00 p.m.

The Transportation Utility Corridor is an active construction site and only authorized personnel are permitted in the area.

**If you have any questions or would like to sign up for SWCRR updates, please contact our  
24/7 phone: 403-212-0565**

info@SWCRRproject.com  
www.SWCRRproject.com





North

Plugs

Plug

Fish Creek  
Realignment

Plug

37 Street S.W.